

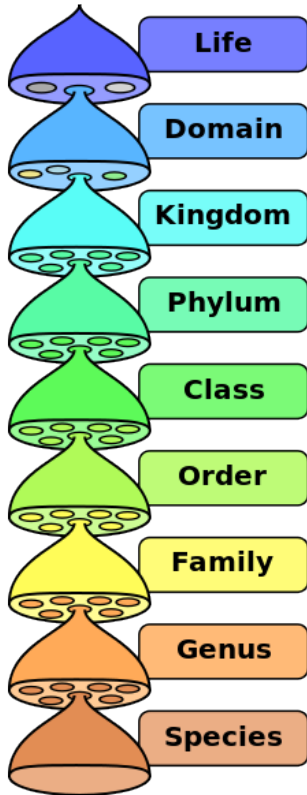
**CLUTCH**

[www.clutchprep.com](http://www.clutchprep.com)

**CONCEPT: PHYLOGENIES**

- Taxonomy – the science of defining groups of organisms based on shared characteristics

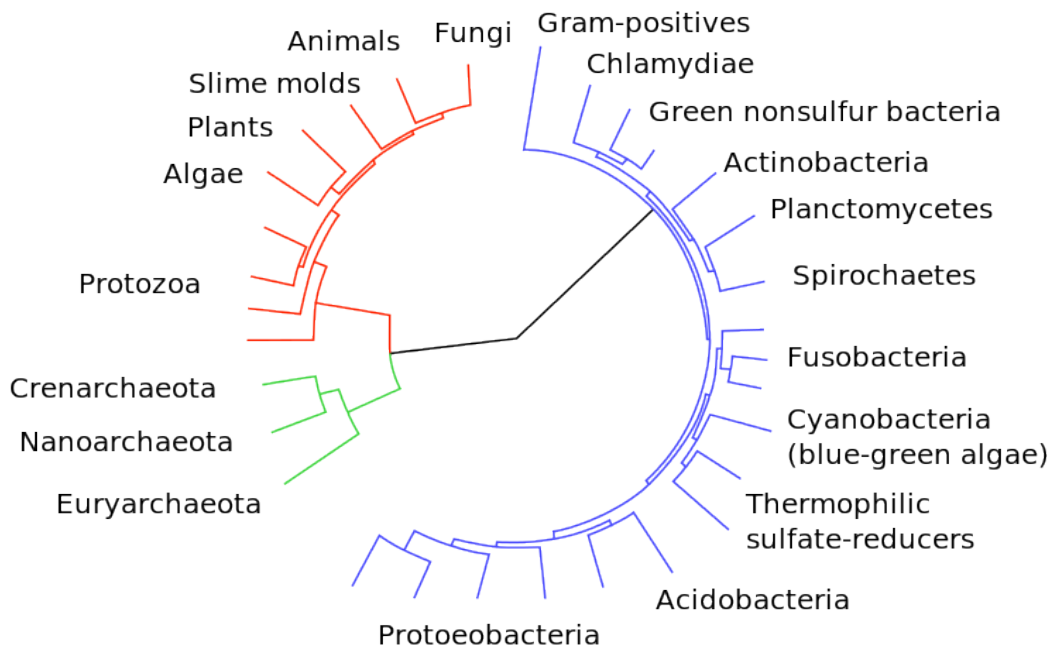
EXAMPLE:



Systematics – the study of life and the relationships between living things through time

- **Phylogenies** – evolutionary relationships between groups of organisms
  - **Phylogenetic tree** – a branching diagram showing inferred evolutionary relationships between species

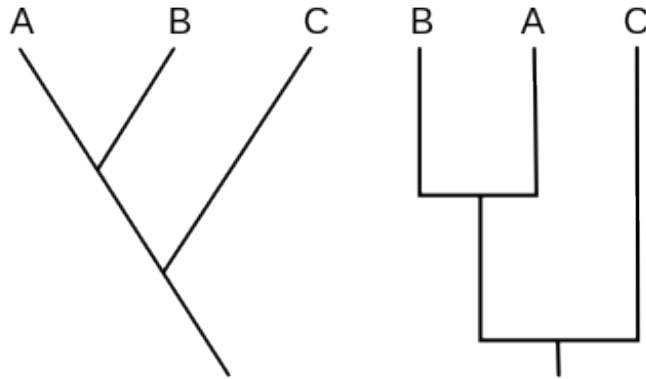
EXAMPLE:



**CONCEPT: PHYLOGENIES**

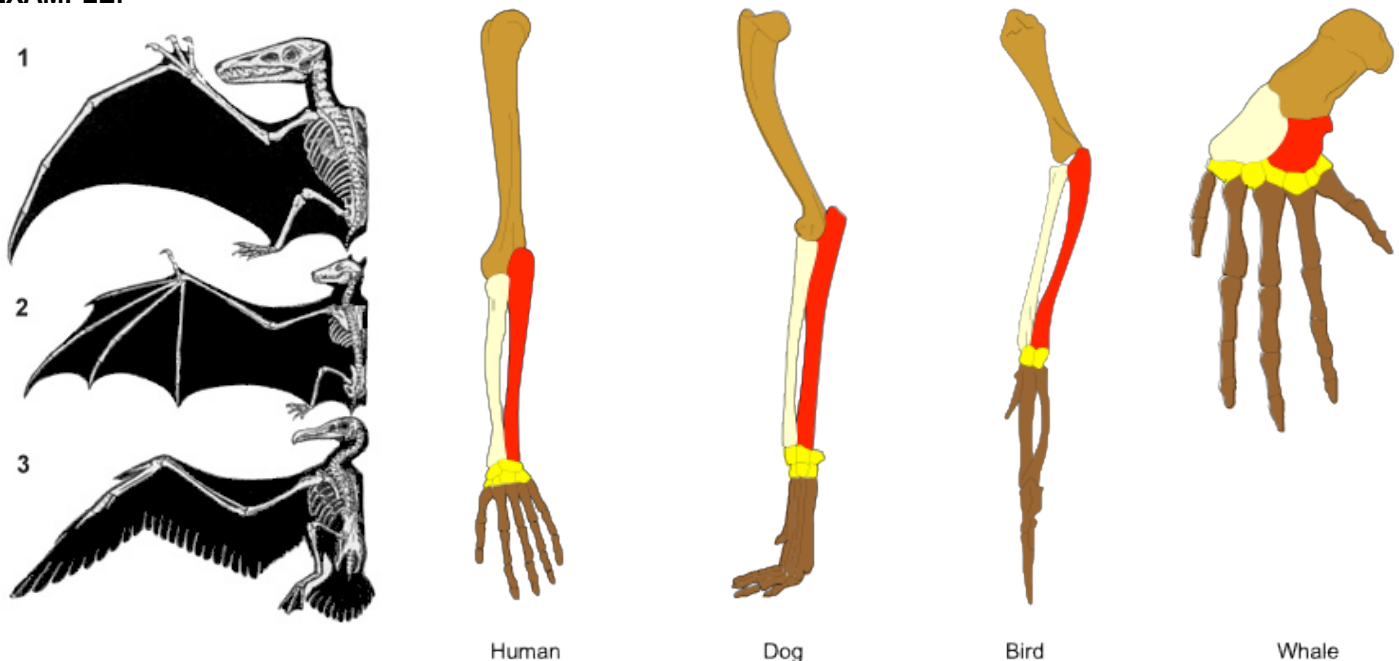
- **Character** – any genetic, morphological, physiological, or behavioral characteristic being studied
  - **Ancestral trait** – a character that existed in an ancestor
  - **Derived trait** – modified form of an ancestral trait

**EXAMPLE:**



- **Homology** – similarity between organisms due to a shared ancestral trait
- **Analogy** – similarity between organisms due to convergent evolution
  - **Homoplasy** – analogous structures that arose independently

**EXAMPLE:**

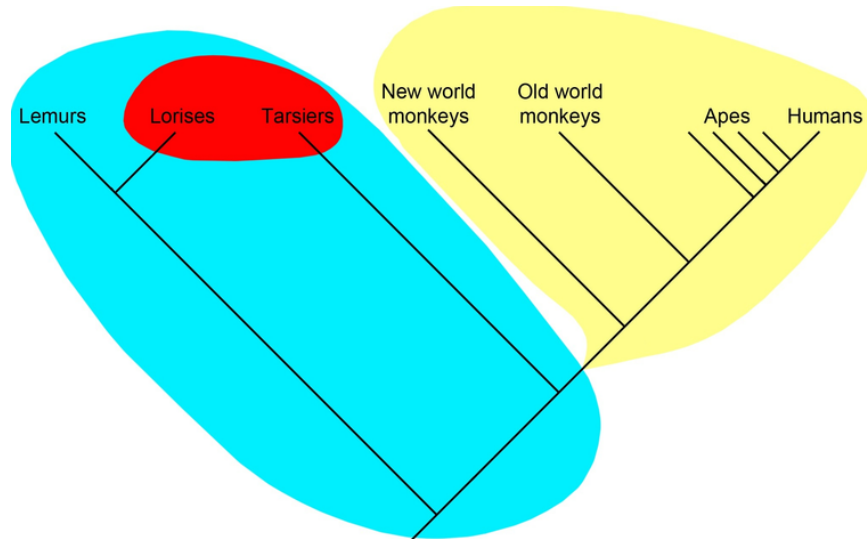


- **Orthologous gene** – homologous genetic sequences that are separated by a speciation event
- **Paralogous gene** – homologous sequences created by a gene duplication event
- **Horizontal gene transfer** – gene is transferred from one genome to another

**CONCEPT: PHYLOGENIES**

- **Cladistics** – type of classification based on shared characteristics between common ancestors
  - **Clade** – group of organisms based on a common ancestor and it's descendants
- **Monophyletic** – ancestral species and all of its descendants
- **Paraphyletic** – ancestral species and some, but not all, of its descendants
- **Polyphyletic** – includes various distantly related species, but not their common ancestor

**EXAMPLE:**



- Outgroup – monophyletic group that serves as a reference point to the one being studied
- **Synapomorphy** – a trait shared by taxa and their most common ancestor, but not the previous ancestor
- **Symplesiomorphies** – ancestral traits shared by two taxa

**EXAMPLE:**

